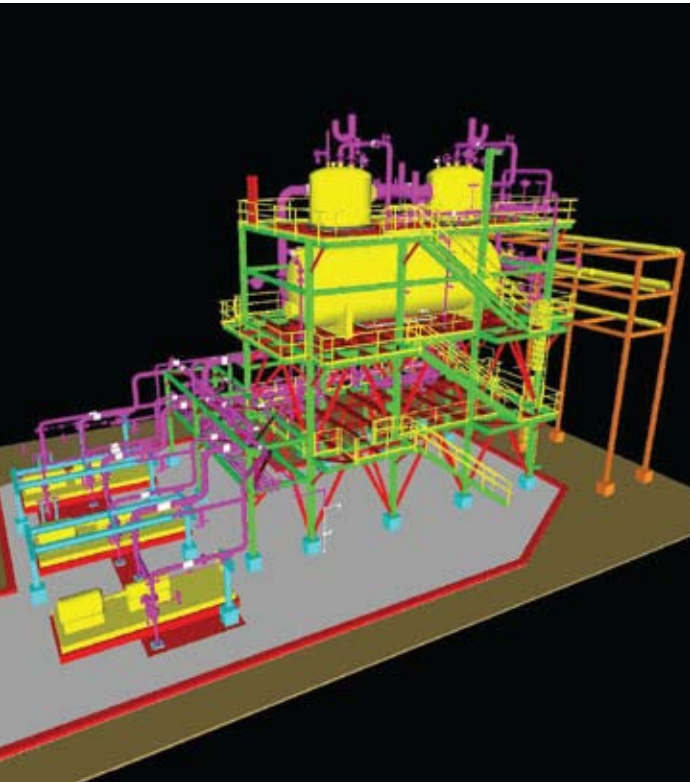


OUR EXPERIENCE

Wink Engineering has provided professional engineering and land surveying services to the refining, chemical/petrochemical, and terminal industries since 1970. We have built a solid reputation throughout the markets we serve for **SAFETY**, **QUALITY**, and **INTEGRITY** – the three pillars which form the core of our business.

In 2009, the privately-held, family-owned Wink Companies, LLC was acquired by Willbros Group, Inc., and became a part of **InServ**, Willbros' downstream business unit. We now provide comprehensive EPC services, as well as "stand-alone" multi-discipline engineering design and project management, doing business as Wink Engineering, an InServ company.



CLIENT LIST INCLUDES:

– REFINING –

ALON REFINING
CHEVRON PRODUCTS COMPANY
CONCOPHILLIPS
EXXONMOBIL CORPORATION
ERGON, INCORPORATED
HUNT REFINING COMPANY
LION OIL COMPANY
MARATHON PETROLEUM COMPANY
MOTIVA ENTERPRISES, LLC
MURPHY OIL USA, INC.
SUNOCO, INCORPORATED
TOTAL PETROCHEMICALS
VALERO REFINING

– CHEMICALS/PETROCHEMICALS –

AIR PRODUCTS & CHEMICALS, INC.
ALBEMARLE CORPORATION
BP LUBRICANTS
CF INDUSTRIES, INC.
CHEVRON ORONITE COMPANY
EXXONMOBIL CHEMICALS
MONSANTO COMPANY
NOVOLYTE TECHNOLOGIES, LLC
OCCIDENTAL CHEMICAL COMPANY
RHODIA, INC.
SHELL CHEMICAL COMPANY
SHINTECH CORPORATION
WILLIAMS OLEFINS, LLC



Wink Engineering

AN INSERV COMPANY

ENGINEERING SURVEYING PROJECT MANAGEMENT



Wink Engineering

AN INSERV COMPANY

CONTACT US

Wink Engineering
8641 United Plaza Blvd.
Baton Rouge, LA 70809
Phone: 225.932.6000
Fax: 225.932.9035

WWW.WINKINC.COM
WWW.INSERVUSA.COM



OUR SERVICES

Wink Engineering has registered professionals in all disciplines of engineering:

- Process/Chemical
- Mechanical/Piping
- Electrical
- Professional Land Surveying
- Environmental
- Civil/Structural
- Instrumentation/Controls

We have experience and expertise in all phases of capital projects:

- Conceptual/Front End Engineering
- Detailed Design in All Disciplines
- Project Management
- Procurement
- Estimating/Scheduling/Project Controls
- Surveying – Boundary, Topo & Hydrographic
- 3-D Laser Scanning (In-House)

As an **InServ Company**, we bring this range of expertise and capabilities to turnkey EPC projects for our clients.

QUALITY PERFORMANCE

Safety - Our intentional focus on safety consciousness, training and awareness has resulted in a superior safety performance record which exceeds even the most challenging standards of our industry. Wink's award-winning, custom-designed Safety Program includes rigorous requirements for job safety analysis, training, accident prevention, and reporting.

Quality in Design - Wink Engineering has developed a custom system of work processes and policies to ensure the quality and accuracy of all work products. The commitment to design quality starts at the highest level of management and ends with technical professionals who take pride and ownership in our work products.

Professionalism - In annual Customer Satisfaction Surveys, Wink consistently receives the highest rating from our clients for staff professionalism, communications, and customer service.

PROVEN RESULTS

Wink Engineering has demonstrated success and a proven track record in delivering engineering work products on time and within budget.

Repeat business - The chief indicator of our successful performance is the high degree of client retention we achieve. More than 90% of our business consists of repeat business and long-term client relationships.

Industry Awards - Wink's achievements have been recognized in numerous awards from prestigious industry groups:

- Construction Industry Construction Excellence (CICE) Awards from the Business Roundtable
- Excellence in Safety Award from the Louisiana Safety Council
- Contractor Safety Excellence Awards from the Gulf Coast Safety Council.

